



Bath Products

Whirlpool System



Pumps - Air Switch & Cord with Nema Plug 120v/60hz



Part #: 1010031

Bulk pack
5.5 Amp
U.S. Patent # 6464471



Part #: 1050031

Single pack
5.5 Amp
U.S. Patent # 6464471



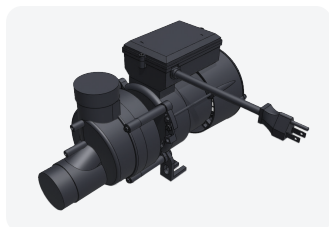
Part #: 1010032

Bulk pack
7.5 Amp
U.S. Patent # 6464471



Part #: 1050032

Single Pack
7.5 Amp
U.S. Patent # 6464471



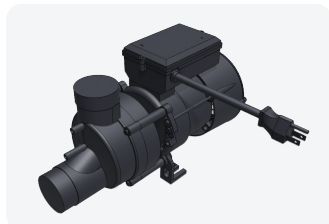
Part #: 1011057

Bulk Pack
9 Amp
U.S. Patent # 6464471



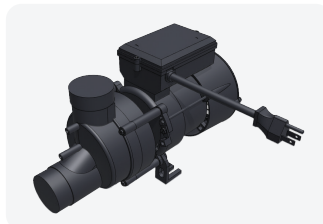
Part #: 1051057

Single Pack
9 Amp
U.S. Patent # 6464471



Part #: 1034002

Bulk Pack
13 Amp
U.S. Patent # 6464471



Part #: 1074002

Single Pack
13 Amp
U.S. Patent # 6464471



Part #: 1216001

WOW Anti-Vibration mount
(3 per pump required)



Part #: 99135-CW

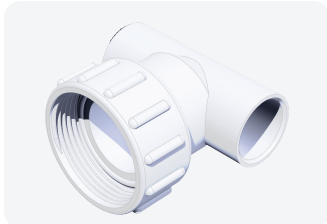
8 jet Select-A-Flow x



Part #: 73890

3/8" Barb EL x 1/2" SPG

Pump Unions



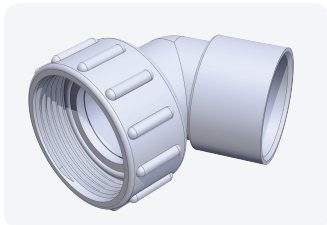
Part #: 3320601

Pump Tee Union x 1" S



Part #: 2614022

1-1/2" Pump union



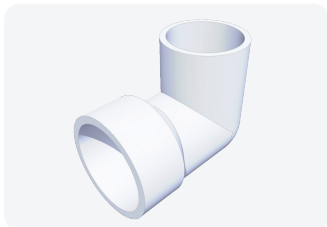
Part #: 3320251

1-1/2" 65 degree pump union



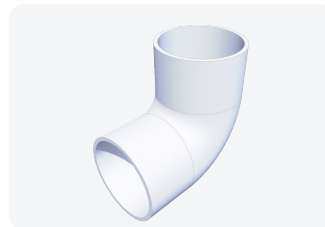
Part #: 92030

Pump Tee Union x 26mm SB



Part #: 30145-V

1-1/2" Street Elbow



Part #: 406-015

1-1/2"S x 1-1/2"S Elbow

Air Controls / Check Valves



Part #: 41140

1/2"S 2mm Filtered Check valve



Part #: 10316-V

(2) 3/8" SB x 1/2" SPG for 41140



Part #: 41122

3/8" Barb Filtered Check valve with Light Spring



Part #: 13643-CW

A/C Silent SF Smooth capw/1/2"S EI



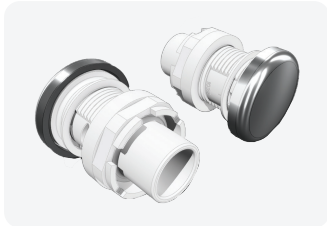
Part #: 13643-PC

A/C Silent SF Smooth capw/1/2\"S EI



Part #: 13676-CW

Smooth 1/2\"S x1/2Turn Silent air control



Part #: 13676-PC

Smooth 1/2\"S x1/2Turn Silent air control

Tubing / Hose



Part #: 63016

1/8\" ID red air button tubing x 500 linear feet



Part #: 63038

3/8\" ID white vinyl tubing x 200 linear feet



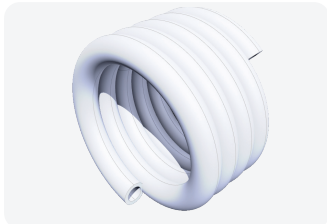
Part #: 63411

3/4\" ID white vinyl tubing x 100 linear feet



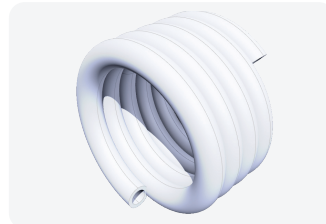
Part #: 63412

1\" ID white vinyl tubing x 100 linear feet



Part #: 63505

1/2\" Spa Flex hose x 100 linear feet



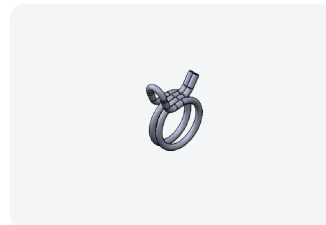
Part #: 63510

1\" Spa Flex hose x 50 linear feet



Part #: 63515

1-1/2\" Spa Flex Hose x 50 linear feet



Part #: 63096

Clamp for 3/8\" ID Tubing

Part #: 63098

Clamp for 3/4\" ID Tubing

Part #: 63099

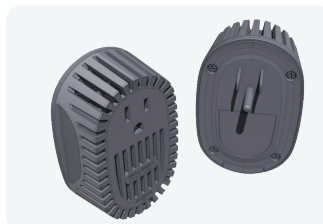
Clamp for 1\" ID Tubing

Controls - 120V Pneumatic / Electronic



Part #: 99636

On /Off
Pneumatic



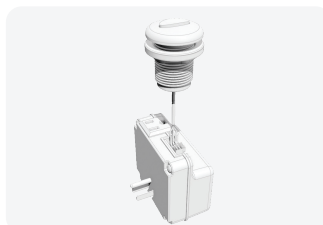
Part #: 99633

On/Off with 20 minute timer
Pneumatic



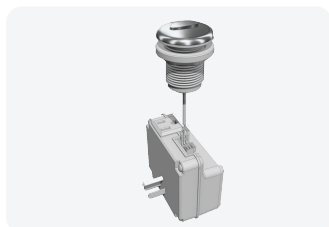
Part #: 99638

Optional remote control for
99633



Part #: 99620-CW

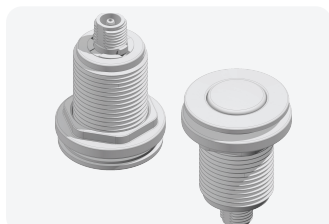
On/Off with 20 minute
Timer
Electronic



Part #: 99620-PC

On/Off with 20 minute
Timer
Electronic

Air Buttons



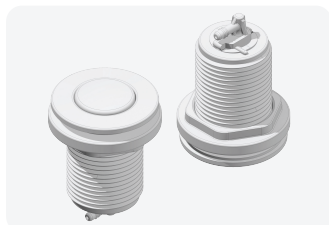
Part #: 13082-CW

White air button



Part #: 13085-PC

Chrome air button



Part #: 13073-CW

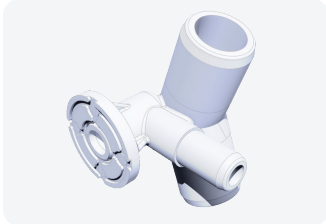
White air button with
90-degree tubing
connection



Part #: 13073-PC

Chrome air button
with 90-degree tubing
connection

H2Zero Jets



Part #: 20625C-V

H2Zero Water Jet x 3/4" SB

US Patent #9526672



Part #: 20629-CW

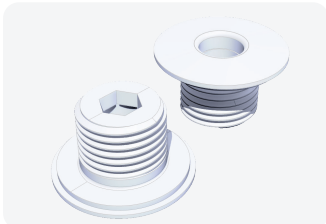
Cap for H2Zero Water Jet



Part #: 47321900

Plug for 20625C-V

Micro Back Jets



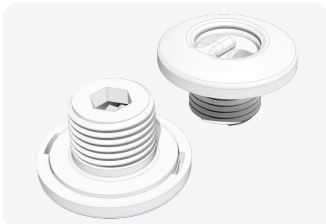
Part #: 20214-CW

Wall Fitting



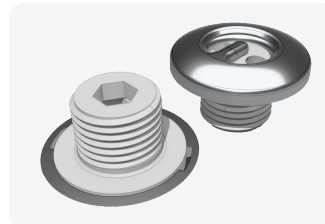
Part #: 20214-PC

Wall Fitting



Part #: 20280-CW

Micro-Pulse Bath T-L ASM



Part #: 20281-PC

Micro-Pulse Bath T-L ASM



Part #: 202236-V

Jet body x 3/8" B x 1/2" SPG



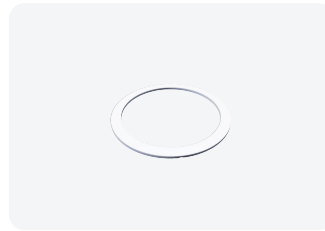
Part #: 27093-V

3/8" Barb x 1/2" SPG



Part #: 20209-V

Jet body x 3/8" Barb



Part #: 20215-V

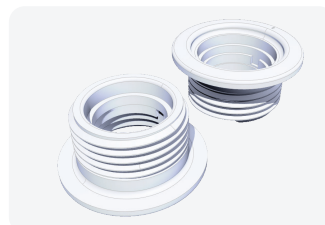
Optional Gasket

Micro Back Jets - Flow Adjustable



Part #: 22452-CW

Micro Pulse V-Jet 3 Scalp Esc



Part #: 20464-V

Micro V jet wall fitting



Part #: 20468-V

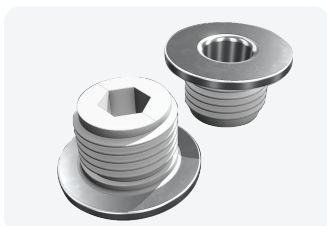
Micro V Jet body 3/8"SB x 26MM



Part #: 20469-V

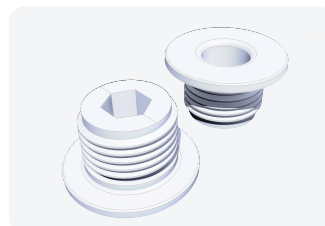
Micro V Jet body 3/8"SB x 1"S

Slimline Back Jets



Part #: 202201-PC

Slimline Back Jet Wall Fitting



Part #: 202201-CW

Slimline Back Jet Wall Fitting



Part #: 282201-PC

Slimline Back Jet Metal Ring



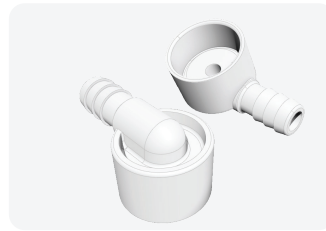
Part #: 282201-CW

Slimline Back Jet Metal Ring



Part #: 202236-V

Jet body x 3/8" B x 1/2" SPG



Part #: 27093-V

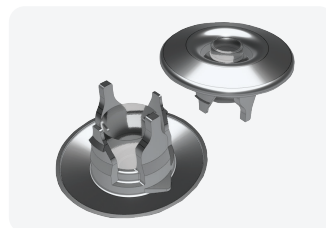
3/8" Barb x 1/2" SPG

Trimline Jets 2-1/2" Outside Diameter



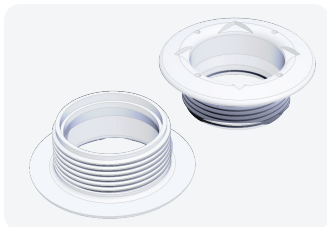
Part #: 23405-CW

Trimline Smooth
Esc / Eyeball ASM
Standard



Part #: 23407-PC

Trimline PLTD Smooth Esc /
CL Eyeball ASM
Standard



Part #: 20376-V

Trimline Std WF
Standard



Part #: 20448S

JB-Std V 3/8" SB x 1" S
Standard



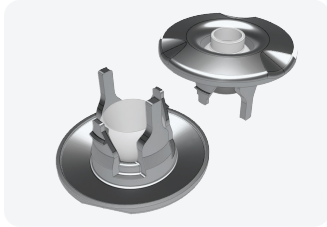
Part #: 20490-V

JB Std V 3/8" SB x 26MM
Standard



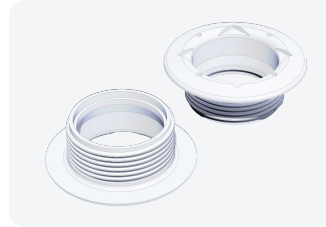
Part #: 23430-CW

3 Scallop Adj Esc & IBL W/
Med Arms
Flow Adjustable



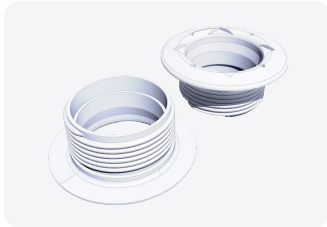
Part #: 23432-PC

3 Scallop Adj Esc &
CL IBL W/Med Arms
Flow Adjustable



Part #: 20376-V

Trimline Std WF
Flow Adjustable



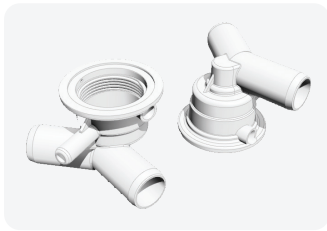
Part #: 20389-V

Trimline WF x 0.830" Thrds
Flow Adjustable



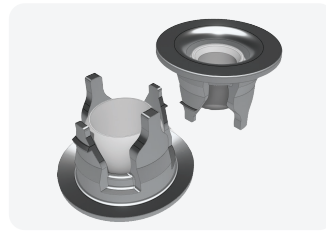
Part #: 20448A

JB-Std Adj V 3/8" SB x 1" S
Flow Adjustable



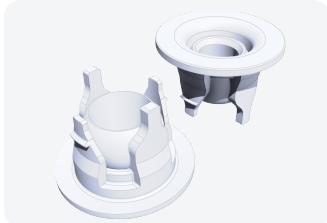
Part #: 20449A

JB Std Adj V 3/8"SB x
26MM
Flow Adjustable



Part #: 202300-PC

Slimline Adj Esc & CL
Eyeball
Flow Adjustable



Part #: 202300-CW

Slimline Adj Esc & Eyeball
Flow Adjustable



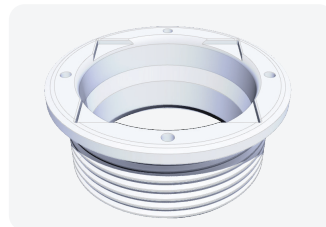
Part #: 282301-CW

Slimline Adj Metal Ring
Flow Adjustable



Part #: 282301-PC

Slimline Adj Metal Ring
Flow Adjustable



Part #: 202306

Slimline Adj Wall Fitting
Flow Adjustable



Part #: 202520A

JB-Slimline Adj 3/8"SB x 1"S
Flow Adjustable



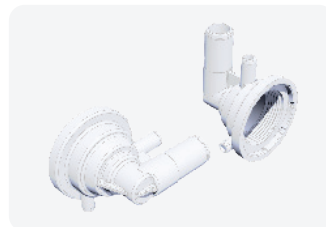
Part #: 202312A

JB-Slimline Adj 1/2" x 1"S
Flow Adjustable



Part #: 202328A

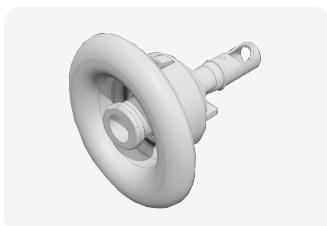
JB-Slimline Adj 3/8"SB x
1/2"SPG
Flow Adjustable



Part #: 202331A

JB-Slimline Adj 3/8"SB x 1/2"S
Flow Adjustable

3" Outside Diameter Jets



Part #: 24324-CW
Part #: 24324-BC

3" Bath Jet Round Esc &
Eyeball Asm



Part #: 24325-PC

3" Bath Jet Round Esc &
Eyeball Asm



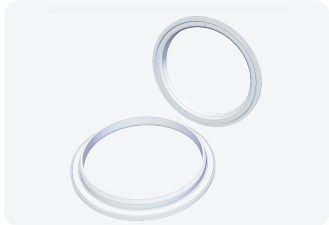
Part #: 24393

3" Bath jet body 3/8B x 1/2"S



Part #: 24394

3" Compensating ring



Part #: 24395

3" E Gasket



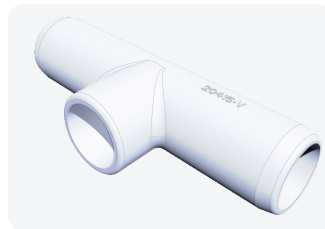
Part #: 24396

3" Nut



Part #: 20417-V

Wye-1/2"SPG x 1"S x 1"S



Part #: 20415-V

Wye-1/2"SPG x 26mm x 26mm SB

Suctions



Part #: 30191-CW

Suction Lo Pro Cover
(Rated 67/109 GPM)
Lo Profile



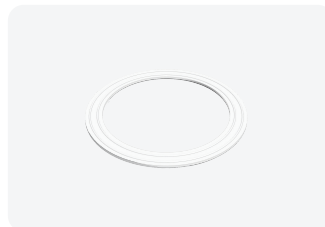
Part #: 30191-PC

Suction Lo Pro Cover
(Rated 67/109 GPM)
Lo Profile



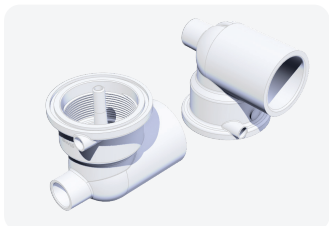
Part #: 30139-V

Wall fitting
Lo Profile



Part #: 30193-V

Optional Gasket
Lo Profile



Part #: 30143-V

1-1/2" Threaded Suction
elbow x 1/2"S
Lo Profile



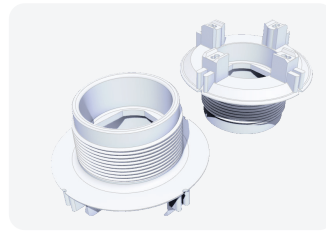
Part #: 73890

3/8" Barb EL x 1/2" SPG
Lo Profile



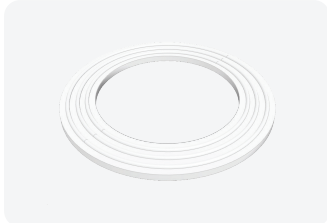
Part #: 30133-CW

100 GPM Suction cover
Standard



Part #: 30147-V

Wall Fitting
Standard



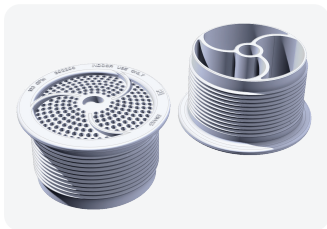
Part #: 30115-V

Optional Gasket
Standard



Part #: 30141-V

1-1/2" Suction Elbow
Standard



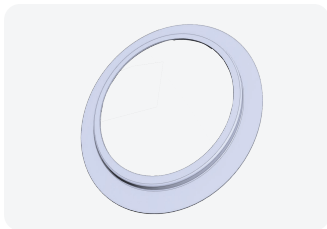
Part #: 302200-CW

Slimline Suction cover /
wall fitting
Standard



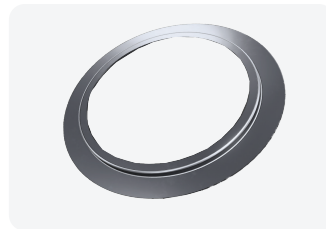
Part #: 302200-PC

Slimline Suction cover /
wall fitting
Standard



Part #: 282401-CW

Slimline Suction Metal ring



Part #: 282401-PC

Slimline Suction Metal ring



Part #: 302201

Slimline Suction elbow x
1/2"S



Part #: 73890

3/8" Barb EL x 1/2" SPG
Slimline

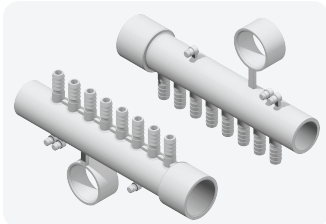
Sanitation



Part #: 59125-KIT

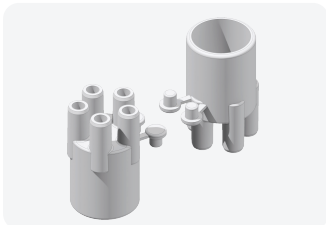
UltraZO3ne 120V/60hz with
Piggyback plug

Manifolds



Part #: 72082

(8) 3/8" barbs x 1" SPG x 1"S with cap



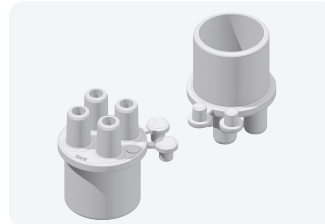
Part #: 72005

(5) 3/8" SB x 1" SPG



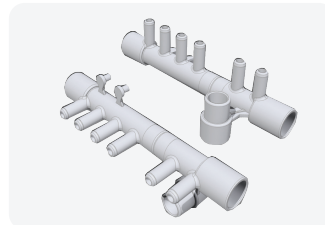
Part #: 73818

Barb-3/8" x 1/2"SPG



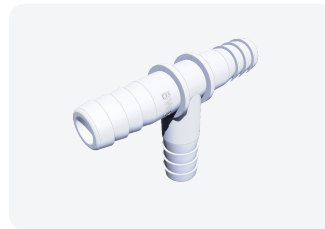
Part #: 72004

(4) 3/8" SB x 1" SPG



Part #: 72016

(6) 3/8"SB x (2) 1/2"S



Part #: 73893

3/8" Barb Tee

Heaters 120v / 60hz



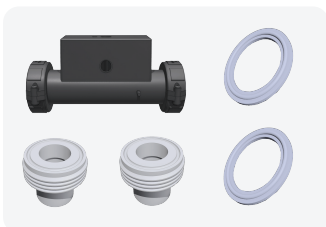
Part #: 93211-21

Tee Heater 1.5KW with 1"S Unions
Bulk Pack



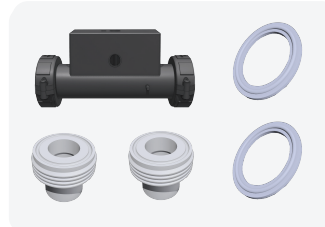
Part #: 93211+21

Tee Heater 1.5KW with 1"S Unions
Single Pack



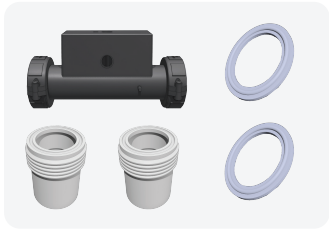
Part #: 93212-21

Pressure inline Heater 1.5KW with 1"S Unions
Bulk Pack

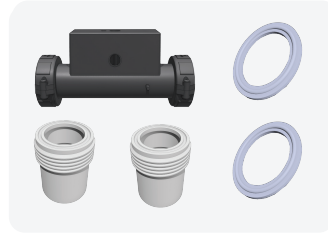


Part #: 93212+21

Pressure inline Heater 1.5KW with 1"S Unions
Single Pack



Part #: 93213-21
Vacuum inline Heater
1.5KW with 1-1/2" S Unions
Bulk Pack



Part #: 93213+21
Vacuum inline Heater
1.5KW with 1-1/2" S Unions
Single Pack



Contact a sales representative
United States - sales@balboawater.com
Europe - europe@balboawater.com

Balboa
2020 Piper Ranch Road, Suite 150
San Diego, CA 92154
Phone: 714.384.0384
www.balboawater.com
Specifications subject to change without notice.